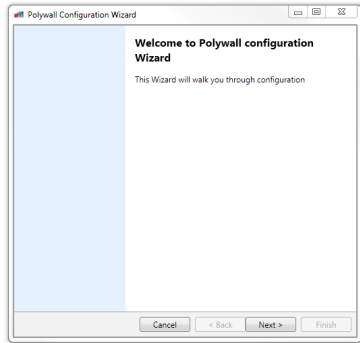


# POLYWALL INSTALLATION GUIDE



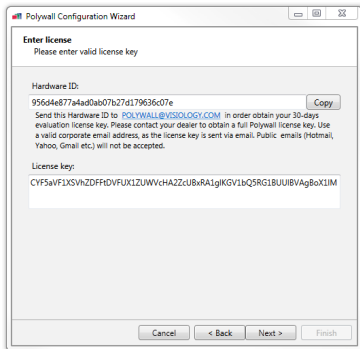
To start work with Polywall software, please download and install Polywall Kit on your system.

Launch the file Polywall Configuration Wizard from the Start menu on your computer.



Polywall Configuration Wizard welcome window will appear on the screen.

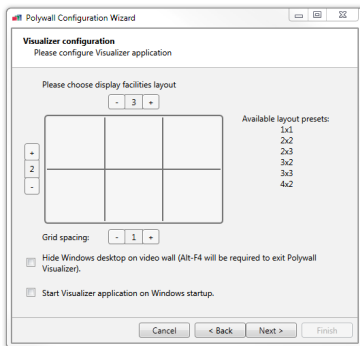
Click 'Next' to start working with the configurator.



To obtain an evaluation license key send your Hardware ID to [polywall@visiology.com](mailto:polywall@visiology.com) and specify desired program version (Polywall or Polywall PRO) in your request.

Click 'Next' to continue.

*Please note, your Hardware ID consists of a letter and a number sequence dynamically generated on each system. It is unique to each particular computer configuration.*



To configure your video wall, select the number of video cubes horizontally and vertically.

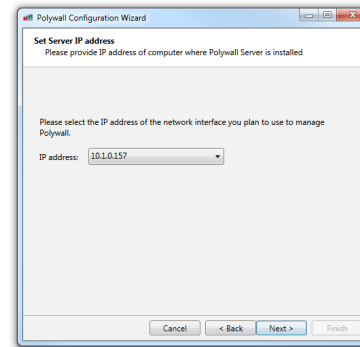
'Grid-spacing' - fgrid frequency within display area.

'Video wall layout' - source displaying layout.

'Hide Windows desktop on video wall' - allows you to hide desktop icons and the Windows control panel. This feature will also replace the background picture with the black color during Visualizer operation.

'Start Visualizer application on Windows startup' enables the Visualizer application to be launched when Windows starts.

Click 'Next'.

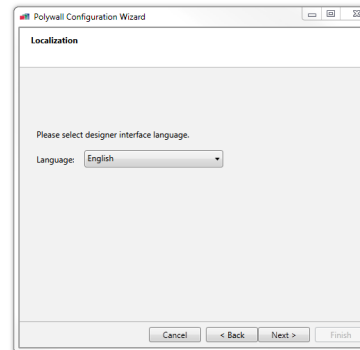


Select the Server's IP address.

To control the Server from another PC, select an appropriate IP address different from local host ('127.0.0.1').

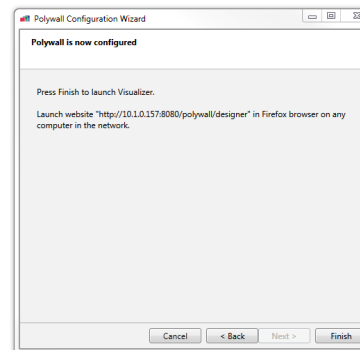
If Polywall components are to be installed on other computers, select that IP address which will be in the shared local network with these components.

Click 'Next'.



Select Designer interface language.

Click 'Next'.



Click 'Finish' to exit the Polywall Configuration Wizard.

You can now control the content on the Server computer.

The Polywall Designer icon will appear on your computer desktop. Open this to start managing the content on the Server display.

*An alternative way: open Mozilla Firefox or Google Chrome on any computer which is within the shared local network with the Server, and enter the following in the address bar [http://IP-address\\_of\\_Server:8080/polywall/designer](http://IP-address_of_Server:8080/polywall/designer)*

For more information on the software installation and control, please, refer to the provided Polywall Installation Manual and Polywall Operator Manual.